

Rectangular punch

Suitable for:

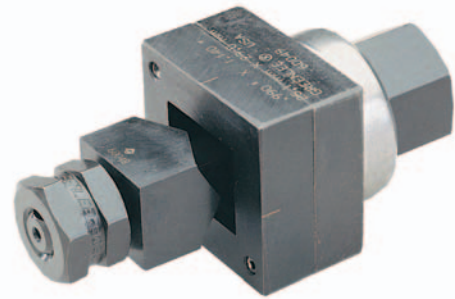
- Mild steel, plastic and aluminium up to 3 mm thick and stainless steel up to 1.5 mm
- Punching of burr-free openings

Operation:

- Manual and hydraulic

Predrilling:

- Ø 9.7 mm pilot drill 50360183
- Ø 12.7 mm pilot drill 50344102
- Ø 15.9 mm pilot drill 50344030
- Ø 30.2 mm pilot drill 50364146



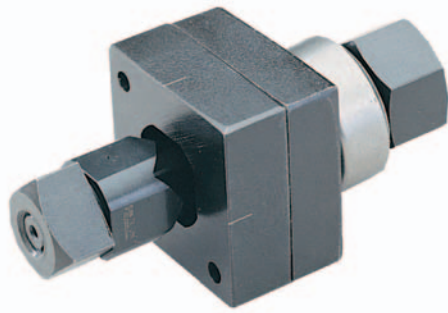
Scope of supply

- Punch unit includes punch, die, draw stud, counter nut and ball-bearing nut

Order info

- * = only for use with hydraulic punch drivers 50159062, 50250973 and LS60Plus
- ** = only for use with hydraulic punch drivers 50159062 and 50250973

Counter nut		Punch		Die	Draw studs				Ball bearing nut	
Punch size mm	Max. material thickness mm	Operation	Complete Unit	Individual parts for manual operation					Mounting hole Ø mm	Optionally available Adapter for hydr. punch drivers
				Punch	Die	Draw studs	ball bearing nut	Counter nut		
11.1 x 22.2	1.5	Hand/hydr.	50600257	50600265	50600273	50601156	50601202	50052446	9.7	50601148
17.0 x 19.0	2.0	Hand/hydr.	50610281	50600290	50600303	50344218	50347330	50046381	12.7	50339672
19.1 x 29.0	2.0	Hand/hydr.	50600311	50600320	50600338	50601172	50601652	50602586	15.9	50601679
19.1 x 33.3	2.0	Hand/hydr.	50600346	50600354	50600362	50601172	50601652	50602586	15.9	50601679
21.9 x 25.9	2.0	Hand/hydr.	50600370	50600389	50600397	50601172	50601652	50602586	15.9	50601679
22.0 x 30.0	2.0	Hand/hydr.	50600400	50600419	50600427	50601172	50601652	50602586	15.9	50601679
22.0 x 42.0	2.0	Hand/hydr.	50600435	50600451	50600460	50601172	50601652	50602586	15.9	50601679
25.1 x 29.0	2.0	Hand/hydr.	50600478	50600486	50600494	50601172	50601652	50602586	15.9	50601679
31.8 x 35.1	2.0	Hand/hydr.	50600508	50600516	50600524	50601172	50601652	50602586	15.9	50601679
33.3 x 66.7	3.0	Hydr.	50600532	50600540	50600559	50601180		50602357	30.2	
35.0 x 52.0	3.0	Hydr.	50600567	50600575	50600583	50601180		50602357	30.2	
35.0 x 65.0	3.0	Hydr.	50600591	50600605	50600613	50601180		50602357	30.2	
35.0 x 82.0	2.0	Hydr.*	50600621	50600630	50600648	50601180		50602357	30.2	
35.0 x 112.0	2.0	Hydr.*	50600656	50600664	50600672	50601180		50602357	30.2	
46.0 x 92.0	3.0	Hydr.*	50600680	50600699	50600702	50601180		50602357	30.2	
57.2 x 88.9	3.0	Hydr.*	50600710	50600729	50600737	50601180		50602357	30.2	
68.0 x 138.0	2.0	Hydr.**	50600745	50600753	50600761	50601180		50602357	30.2	



■ Square punch

Suitable for:

- Mild steel, plastic and aluminium up to 3 mm thick and stainless steel up to 1.5 mm
- Punching of burr-free openings

Operation:

- Manual and hydraulic

Predrilling:

- Ø 9.7 mm pilot drill 50360183
- Ø 12.7 mm pilot drill 50344102
- Ø 15.9 mm pilot drill 50344030
- Ø 30.2 mm pilot drill 50364146

Scope of supply

- Punch unit including punch, die, draw stud, counter nut and ball-bearing nut

Order info

- * = only for use with hydraulic punch drivers 50159063, 50250973 and LS60PLUS
- ** = only for use with hydraulic punch drivers 50159063 and 50250973

Counter nut		Punch		Die		Draw studs			Ball bearing nut	
Punch size mm	Max. material thickness mm	Operation	Complete Unit	Individual parts for manual operation					Mounting hole Ø mm	Optionally available Adapter for hydr. punch drivers
				Punch	Die	Draw studs	ball bearing nut	Counter nut		
12.7 x 12.7	1.5	Hand/hydr.	50600010	50600028	50600036	50601156	50601202	50052446	9.5	50601148
15.9 x 15.9	2.0	Hand/hydr.	50600044	50600052	50600060	50344218	50347330	50046381	12.7	50339672
19.1 x 19.1	2.0	Hand/hydr.	50610076	50600087	50600095	50344218	50347330	50046381	12.7	50339672
22.4 x 22.4	2.0	Hand/hydr.	50610106	50600117	50600125	50344218	50347330	50046381	12.7	50339672
24.0 x 24.0	2.0	Hand/hydr.	50610144	50600141	50600150	50344218	50347330	50046381	12.7	50339672
25.4 x 25.4	2.0	Hand/hydr.	50600168	50600176	50600184	50601172	50601652	50602586	15.9	50601679
45.0 x 45.0	2.0	Hydr.	50602870	50767640	50767657	50601180		50602357	30.2	
46.0 x 46.0	3.0	Hydr.	50600192	50600206	50600214	50601180		50602357	30.2	
50.8 x 50.8	3.0	Hydr.	50601687	50601695	50601709	50601180		50602357	30.2	
68.0 x 68.0	3.0	Hydr.	50601717	50601725	50601733	50601180		50602357	30.2	
92.0 x 92.0	3.0	Hydr.*	50601741	50601750	50601768	50601180		50602357	30.2	
104.8 x 104.8	2.0	Hydr.*	50601776	50601784	50601792	50601180		50602357	30.2	
138.0 x 138.0	2.0	Hydr.**	50602349	50600230	50600249	50601180		50602357	30.2	

■ **Special square punch with flattened corners**

Suitable for:

- Mild steel, plastic and aluminium up to 2 mm thick
- Punching of burr-free openings

Operation:

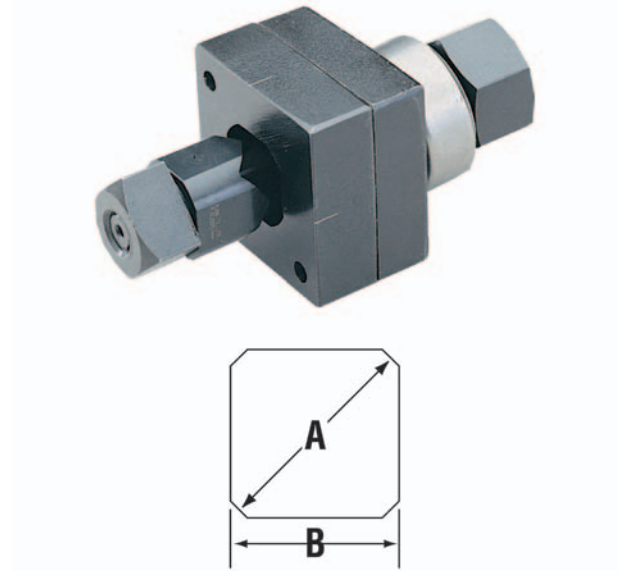
- Manual and hydraulic

Predrilling:

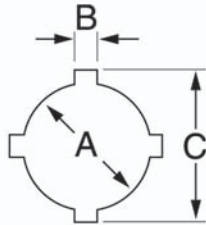
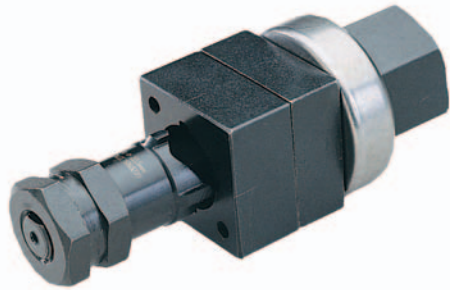
- Ø 12.7 mm pilot drill 50344102

Scope of supply

- Punch unit including punch, die, draw stud, counter nut and ball-bearing nut



Counter nut		Punch		Die		Draw studs				Ball bearing nut	
Punch size mm		Max. material thickness mm	Operation	Complete Unit	Individual parts for manual operation					Mounting hole Ø mm	Optionally available Adapter for hydr. punch drivers
A	B				Punch	Die	Draw studs	ball bearing nut	Counter nut		
22.5	20.1	2.0	Hand/hydr.	50611257	50611264	50601270	50344218	50347330	50046381	12.7	50339672



■ Oiltight punch

Suitable for:

- Mild steel, plastic and aluminium up to 3 mm thick

Operation:

- Manual and hydraulic

Predrilling:

- Ø 15.9 mm pilot drill 50344030

Scope of supply

- Punch unit including punch, die, draw stud, counter nut and ball-bearing nut

Counter nut			Punch		Die	Draw studs					Ball bearing nut	
Punch size mm			Max. material thickness mm	Operation	Complete Unit	Individual parts for manual operation					Mounting hole Ø mm	Optionally available Adapter for hydr. punch drivers
A	B	C				Punch	Die	Draw studs	ball bearing nut	Counter nut		
22.5	3.2	25.4	2.0	Hand/hydr.	50602381	50602390	50602500	50601172	50601652	50602586	15.9	50601679
30.5	4.8	36.0	3.0	Hand/hydr.	50602420	50602438	50602497	50601172	50601652	50602586	15.9	50601679

■ „D“ special shape punch

Suitable for:

- Mild steel, plastic and aluminium up to 2 mm thick

Operation:

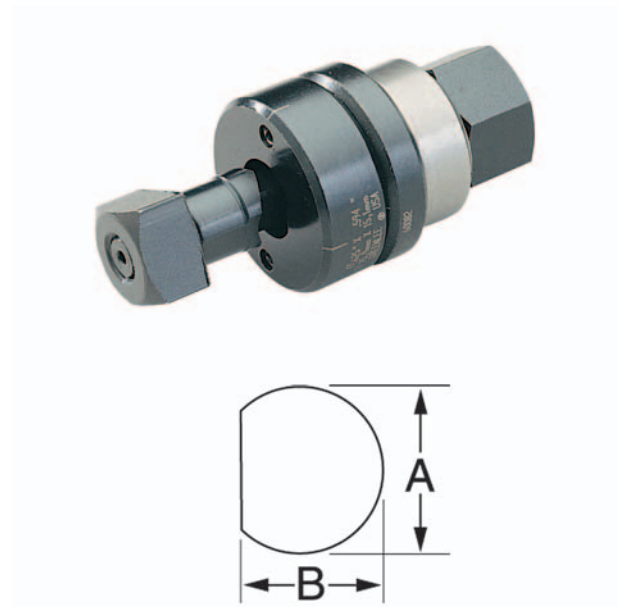
- Manual and hydraulic

Predrilling:

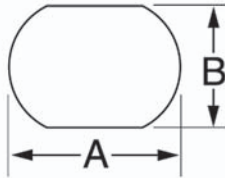
- Ø 12.7 mm pilot drill 50344102

Scope of supply

- Punch unit including punch, die, draw stud, counter nut and ball-bearing nut



Counter nut		Punch		Die		Draw studs			Ball bearing nut		
Punch size mm		Max. material thickness mm	Operation	Complete Unit	Individual parts for manual operation					Mounting hole Ø mm	Optionally available Adapter for hydr. punch drivers
A	B				Punch	Die	Draw studs	ball bearing nut	Counter nut		
12.7	11.9	2.0	Hand/hydr.	50600770	50600788	51600790	50601156	50601202	50052446	12.7	50601148
15.9	15.1	2.0	Hand/hydr.	50600800			50601130	50347330	50046381	12.7	50339672
19.1	17.9	2.0	Hand/hydr.	50600834			50601130	50347330	50046381	12.7	50339672



■ Double-“D” special shape punch

Suitable for:

- Mild steel, plastic and aluminium up to 2 mm thick

Operation:

- Manual and hydraulic

Predrilling:

- Ø 15.9 mm pilot drill 50344030

Scope of supply

- Punch unit including punch, die, draw stud, counter nut and ball-bearing nut

Counter nut		Punch		Die	Draw studs					Ball bearing nut	
Punch size mm		Max. material thickness mm	Operation	Complete Unit	Individual parts for manual operation					Mounting hole Ø mm	Optionally available Adapter for hydr. punch drivers
A	B				Punch	Die	Draw studs	ball bearing nut	Counter nut		
19.5	16.3	2.0	Hand/hydr.	50610861	50600877	50600885	50601130	50347330	50046381	15,9	50339672
20.2	17.6	2.0	Hand/hydr.	50610892	50600907	50600915	50601130	50347330	50046381	15,9	50339672
23.2	19.2	2.0	Hand/hydr.	50610922	50600931	50600940	50601130	50347330	50046381	15,9	50339672
23.2	20.2	2.0	Hand/hydr.	50600958	50600966	50600974	50601130	50347330	50046381	15,9	50339672
34.9	28.6	2.0	Hand/hydr.	50600982	51600990	51601000	50601660	50601652	50602586	15,9	50601679

Keyway Punch

Suitable for:

- Mild steel, plastic and aluminium up to 2 mm thick

Operation:

- Manual and hydraulic

Predrilling:

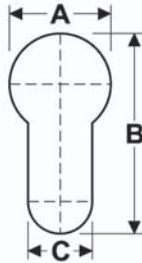
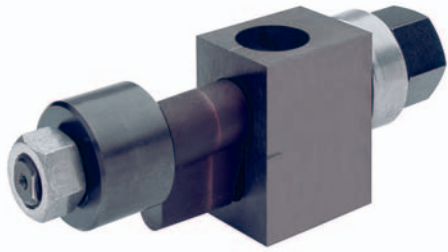
- Ø 15.9 mm pilot drill 50344030

Scope of supply

- Punch unit including punch, die, draw stud, counter nut and ball-bearing nut



Counter nut		Punch		Die		Draw studs				Ball bearing nut	
Punch size mm		Max. material thickness mm	Operation	Complete Unit	Individual parts for manual operation					Mounting hole Ø mm	Optionally available Adapter for hydr. punch drivers
A	B				Mild steel	Punch	Die	Draw studs	ball bearing nut		
12.2	1.4	1.5	Hand/hydr.	50601016	51601020	51601030	50601156	50601202	50052446	15,9	50601148
29.7	3.1	2.0	Hand/hydr.	50601040	51601050	51601060	50601660	50601652	50602586	15,9	50601679
32.1	4.0	2.0	Hand/hydr.	50601075	51601080	51601090	50601660	50601652	50602586	15,9	50601679
33.7	2.6	2.0	Hand/hydr.	50601105	51601110	50601121	50601660	50601652	50602586	15,9	50601679



■ Cylinder lock punch

Suitable for:

- Mild steel up to 1.5 mm thick and aluminium up to 3.5 mm

Operation:

- Manual and hydraulic

Predrilling:

- Ø 12.7 mm pilot drill 50344102

Scope of supply

- Punch unit including punch, die, draw stud, counter nut and ball-bearing nut

Counter nut			Punch		Die	Draw studs			Ball bearing nut				
Punch size mm			Max. material thickness mm	Operation	Complete Unit	Individual parts for manual operation						Mounting hole Ø mm	Optionally available Adapter for hydr. punch drivers
A	B	C				Punch	Die	Draw studs	ball bearing nut	Counter nut	Spacer Spacer		
17.0	33.3	10.5	2.0	Hand/hydr.	50053078	50053027	50053035	50053043	50347330	90500113	50053051	12,7	50339672

Sub-Min-D-punch

Suitable for:

- Mild steel up to 1.5 mm thick and aluminium up to 3.5 mm
- Front or rear mounting

Operation:

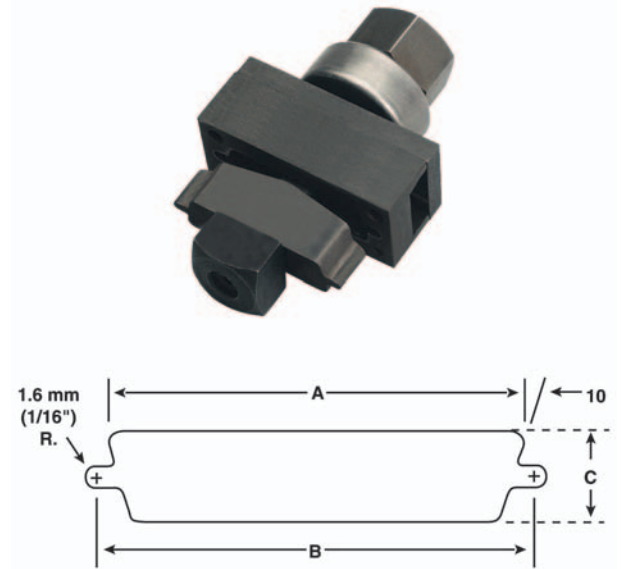
- Manual and hydraulic

Predrilling:

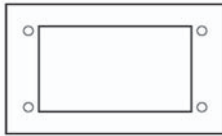
- Ø 12.7 mm pilot drill 50344102

Scope of supply

- Punch unit including punch, die, draw stud, counter nut and ball-bearing nut



Standard	Number Pole	Operation	Complete Unit	Dimensions mm			Individual parts for manual operation					Optionally available Adapter for hydr. punch drivers
				A	B	C	Punch	Die	Draw studs	ball bearing nut	Counter nut	
229	9	Hand/hydr.	50344366	20.0	24.9	11.9	50344412	50351966	50344218	50347330	50046381	50339672
231	15	Hand/hydr.	50344374	28.6	33.3	11.9	50344420	50351974	50344218	50347330	50046381	50339672
RS232	25	Hand/hydr.	50344200	42.0	47.1	11.9	50344188	50351982	50344218	50347330	50046381	50339672
234	37	Hand/hydr.	50344293	58.3	63.4	11.9	50344277	50351990	50344218	50347330	50046381	50339672
238	50	Hand/hydr.	50344447	55.9	61.0	14.7	50344439	50352008	50344218	50347330	50046381	50339672



Special shape punch for heavy duty connectors

Suitable for:

- Mild steel up to 3 mm thick and aluminium up to 3.5 mm

Operation:

- Hydraulic

Predrilling:

- Ø 30.2 mm pilot drill 50364146

Characteristics

- Rectangular punches for heavy duty connectors feature a drilling jig built into the die, for drilling the 4 locating holes

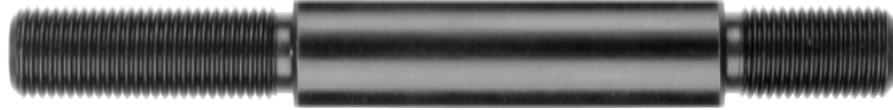
Scope of supply

- Punch unit including punch, die, draw stud and counter nut.

Punch size mm	Max. material thickness mm	Operation	Complete Unit	Individual parts for manual operation					Mounting hole Ø mm	Optionally available Adapter for hydr. punch drivers
				Punch	Die	Draw studs	ball bearing nut	Counter nut		
36,0 x 52,0	3,0	Hydraulic	52033816			52033836		52033844	30,2	
36,0 x 65,0	3,0	Hydraulic	52033817			52033836		52033844	30,2	
36,0 x 86,0	3,0	Hydraulic	52033818			52033836		52033844	30,2	
36,0 x 91,0	3,0	Hydraulic	52033819			52033836		52033844	30,2	
36,0 x 112,0	3,0	Hydraulic	52033820			52033836		52033844	30,2	
46,0 x 112,0	3,0	Hydraulic	52033831			52033836		52033844	30,2	
46,0 x 112,0	3,0	Hydraulic	52033832			52033836		52033844	30,2	

Draw studs for special shape punches

► To increase service life, we recommend to lubricate the draw studs with Greenlee assembly paste no. 50115472.



Dimensions	Part No.
12.7 x 117 mm	50601660



Dimensions	Part No.
12.7 x 117 mm	50601172



Dimensions	Part No.
9.5 x 93 mm	50601130



Dimensions	Part No.
9.5 x 95 mm	50601164



Dimensions	Part No.
9.5 x 88 mm	50344218



Dimensions	Part No.
6.3 x 87 mm	50601156



Dimensions	Part No.
19 x 171 mm	50601180



Dimensions	Part No.
9.5 x 135 mm	50053043

