

■ Punched cable lug, Cu 6 - 35 mm²

- For screwing conductors to VDE 0295 Class 1 and 2, for example in lighting protection areas

Characteristics

- For outdoor assembly

Material

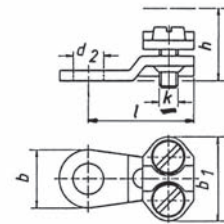
- Cu-ETP
- Screws: DIN 84 / DIN 933 bronze, F 60, 2 pcs.

Surface

- tin plated

Order info

- Bright finish version also available, part number appendix „bk“



Cross-section mm ²	Part No.	Dimensions mm						Weight/100 pcs. ~ kg	pcs.
		d2	b	b1	h	l	k		
6 - 10	572R6	6.5	15.0	18.0	10	23.0	M4	1.30	50
10 - 16	573R6	6.5	15.0	20.5	14	27.0	M5	1,30	50
	573R8	8.5	15.0	20.5	14	27.0	M5	1,30	50
16 - 25	574R8	8.5	15.0	25.0	16	30.0	M5	2.75	50
25 - 35	575R8	8.5	18.5	24.0	16	25.5	M5	2.50	50

■ Tube screw connectors, CuZn 6 - 300 mm²

- A firm connection needs to be soldered.

Characteristics

- With soldering hole for simple processing
- Screws for fixing the conductor during soldering

Material

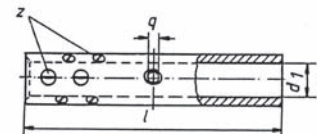
- CuZn 40 Pb 2
- Screws: DIN 551 steel

Surface

- tin plated

Order info

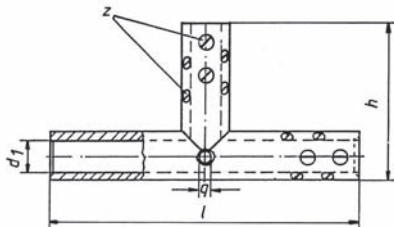
- z = Number of set screws



Cross-section mm ²	Part No.	Dimensions mm				Weight/100 pcs. ~ kg	pcs.
		d1	l	∅ q	z*		
6	551R	3.5	25	3.3	2	0.60	10
10	552R	4.5	30	3.3	2	1.20	10
16	553R	5.5	40	4.2	4	1.90	10
25	554R	7.0	45	4.2	4	2.85	10
35	555R	8.5	45	5.0	4	3.00	10
50	556R	10.0	48	5.0	4	4.00	10
70	557R	12.0	52	6.8	4	6.30	10
95	558R	13.5	55	6.8	4	8.05	10
120	559R	15.0	60	6.8	4	9.90	10

■ Tube screw connectors, CuZn 6 - 300 mm²

Cross-section mm ²	Part No.	Dimensions mm				Weight/100 pcs. ~ kg	pcs.
		d1	l	Ø q	z*		
150	560R	17.0	64	6.8	4	11.80	5
185	561R	19.0	70	6.8	10	14.30	5
240	562R	21.0	70	6.8	10	15.50	5
300	563R	24.0	75	6.8	10	19.30	1



■ Screw T-connectors, CuZn 4 - 95 mm²

■ A firm connection needs to be soldered.

Characteristics

- With soldering hole for simple processing
- Screws for fixing the conductor during soldering

Material

- CuZn 40 Pb 2
- Screws: DIN 551 steel

Surface

- tin plated

Order info

- z = Number of set screws

Cross-section mm ²	Part No.	Dimensions mm					Weight/100 pcs. ~ kg	pcs.
		d1	h	l	Ø q	z*		
4 - 6	TAS6	3.0	18	30	2.5	3	1.05	10
10	TAS10	4.5	25	40	3.5	3	2.15	10
16	TAS16	5.5	27	42	3.5	6	2.50	10
25	TAS25	7.0	29	45	4.5	6	3.70	10
35	TAS35	8.5	32	52	4.5	6	4.30	10
50	TAS50	10.0	34	56	6.0	9	7.40	10
70	TAS70	12.0	41	62	6.5	9	9.80	5
95	TAS95	13.5	44	68	7.0	9	12.80	5